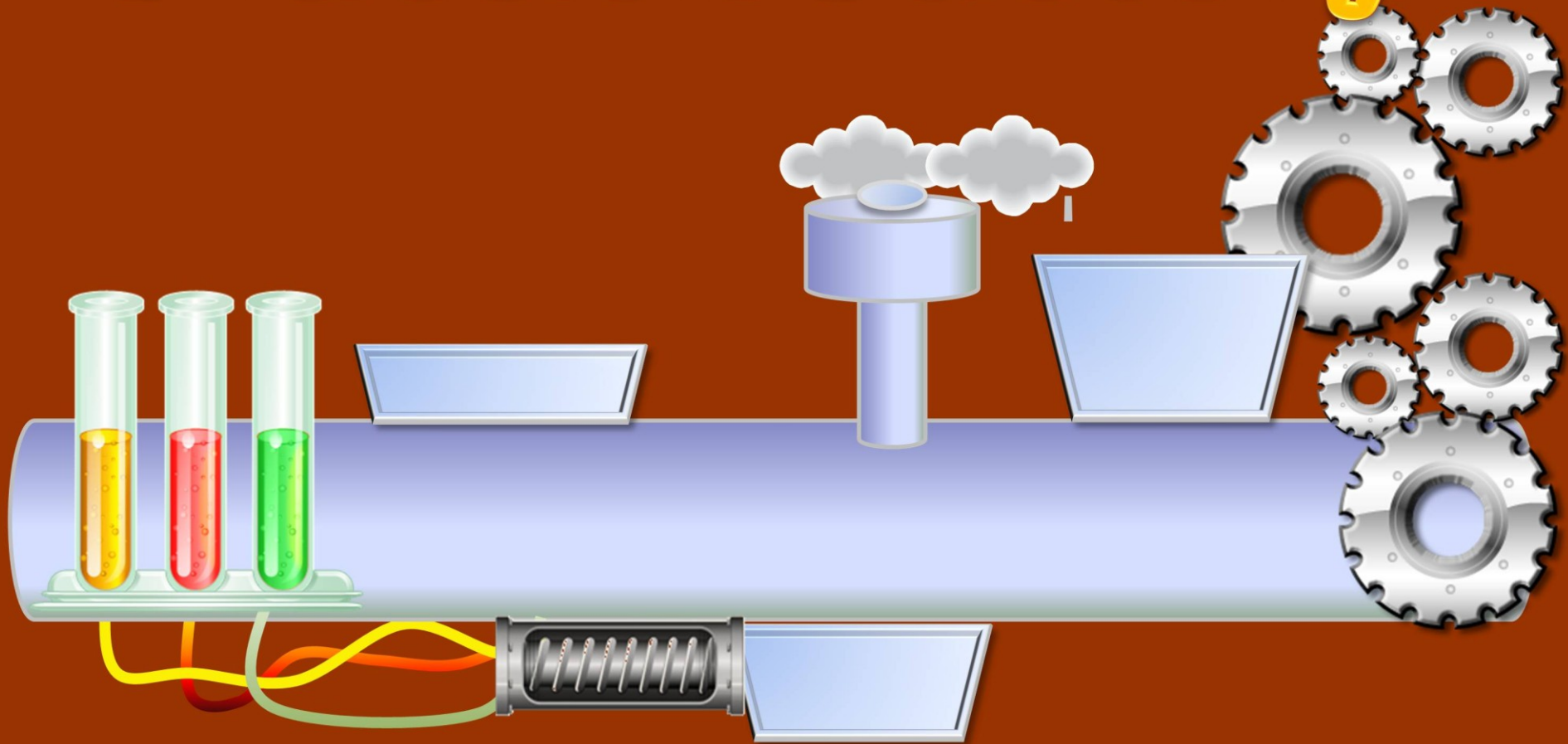


The Chocolate Fraction Factory



Dear Teachers,

Thank you for your purchase, I know you will find this activity as helpful and engaging as I did. Please remember to leave feedback, it is valued and appreciated!

Many thanks,

Amber Antill – Creator, Candoforkids

Included with this pack:

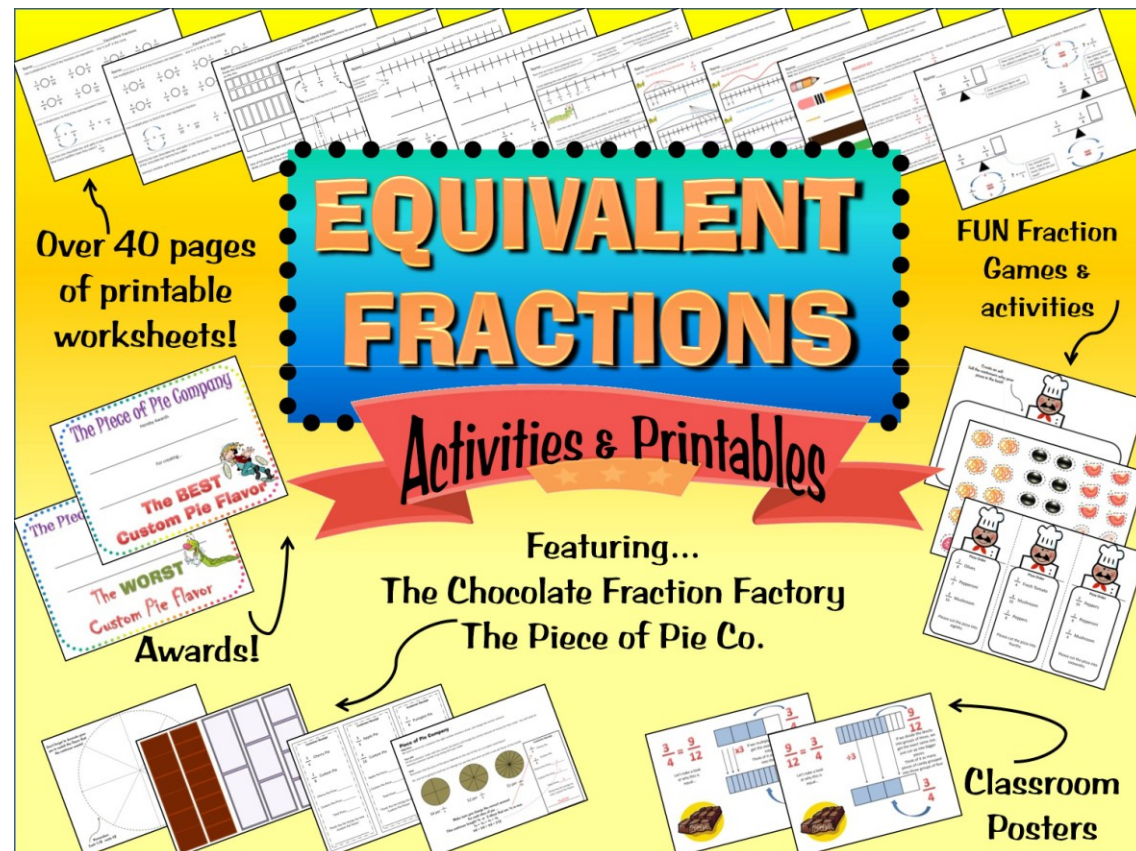
1. Activity: - Chocolate fraction Factory

Introduction page with explanation and examples and a stated objective

Printable “chocolate bars” and labels

Award certificate for the best label design and best product name

Check out the FULL version of equivalent fractions complete with The Chocolate Fraction Factory, The Piece of Pie Co. and Pizza Toppings Fractions along with classroom posters and over 40 worksheets!



Activity- Chocolate Fraction Factory

For use individually or in a group

This activity can last a few days or go all week, depending on the time you have

Introduction Page

Introduces the objective that the “Chocolate Factory” wants to make bite sized pieces of candy for the upcoming Candy Convention. Introduces a problem for the students to solve...They must find the best way to package chocolate bars that are cut into eighths and sixths...When the wrappers are the same size as a full bar of chocolate, but The Ugly Label Company has cut the labels into fourths and thirds and halves!

Printable Pages

2 “chocolate bars” and 3 different size labels

Have the students cut the chocolate bars into pieces, following the lines on the template

Have the students cut the labels, following the lines on the template

The students then have to figure out how many pieces (fractions) will fit into the “wrappers”

*This hands-on activity gets the students to really understand what’s behind solving for equivalent fractions, and what it all means in the real world.

Have the students tape the mini “chocolates to the back of the labels.

The added FUN factor is that there is a challenge to come up with the best name for the new chocolate product and best label design.

You may choose to use the award certificates included or not

A Hershey bar is a perfect prop for this activity...Yum!

Chocolate Fraction Factory

Objective:

We want to make miniatures and bite sized pieces of our candy for the upcoming Candy Convention.

Your job:

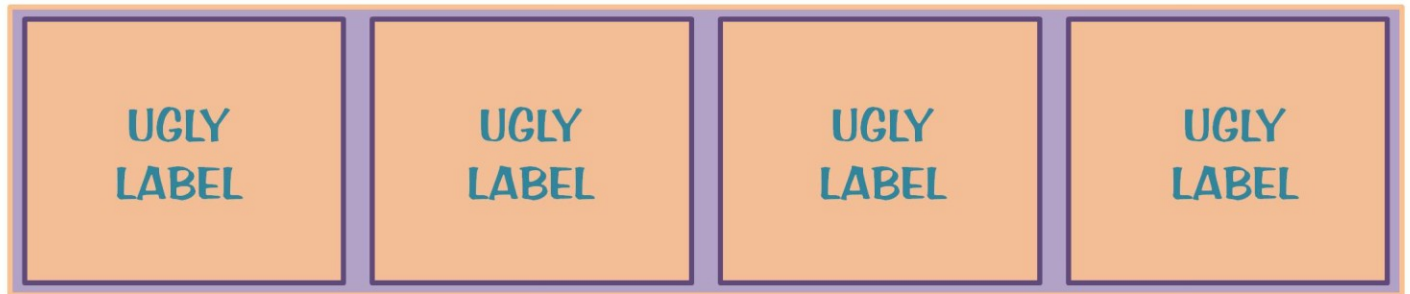
Find the best way to package our chocolate bars that are cut into eighths and sixths...OOPS!

The problem is, our wrappers are the same size as a full bar of chocolate, but The Ugly Label Company has cut the labels into fourths and thirds and halves!

Hint:

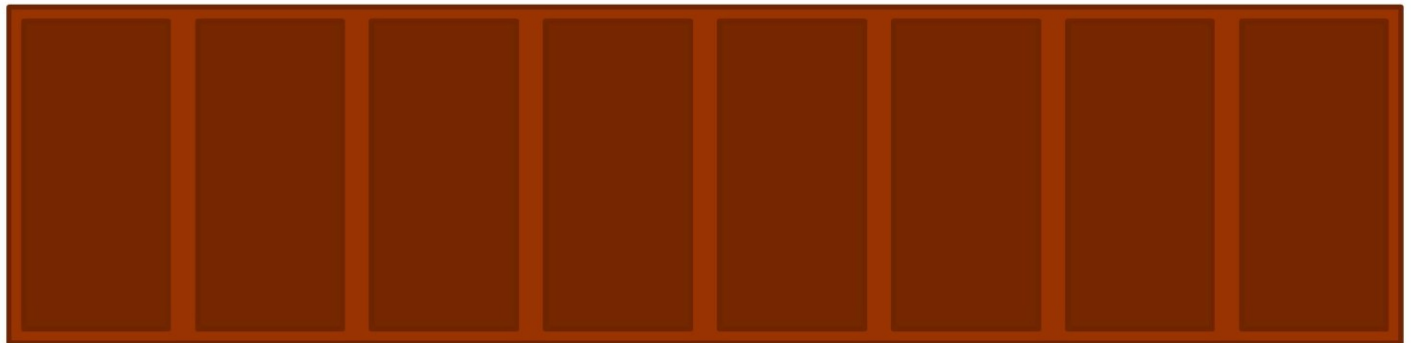
We don't care how many pieces are in each wrapper

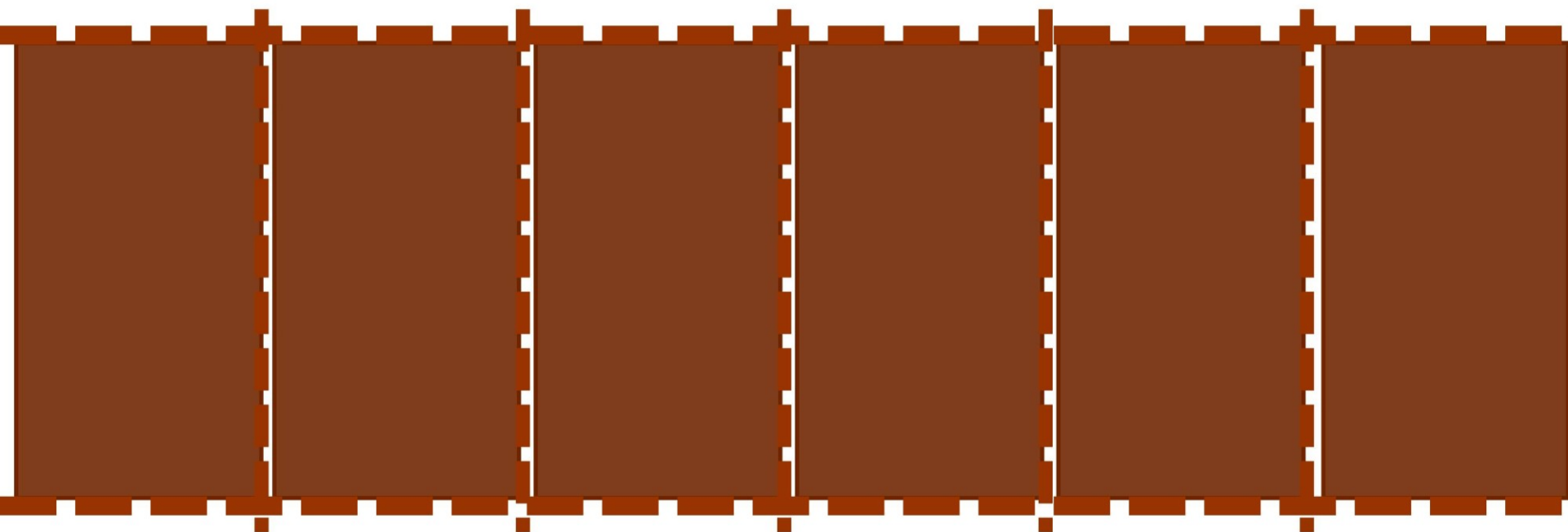
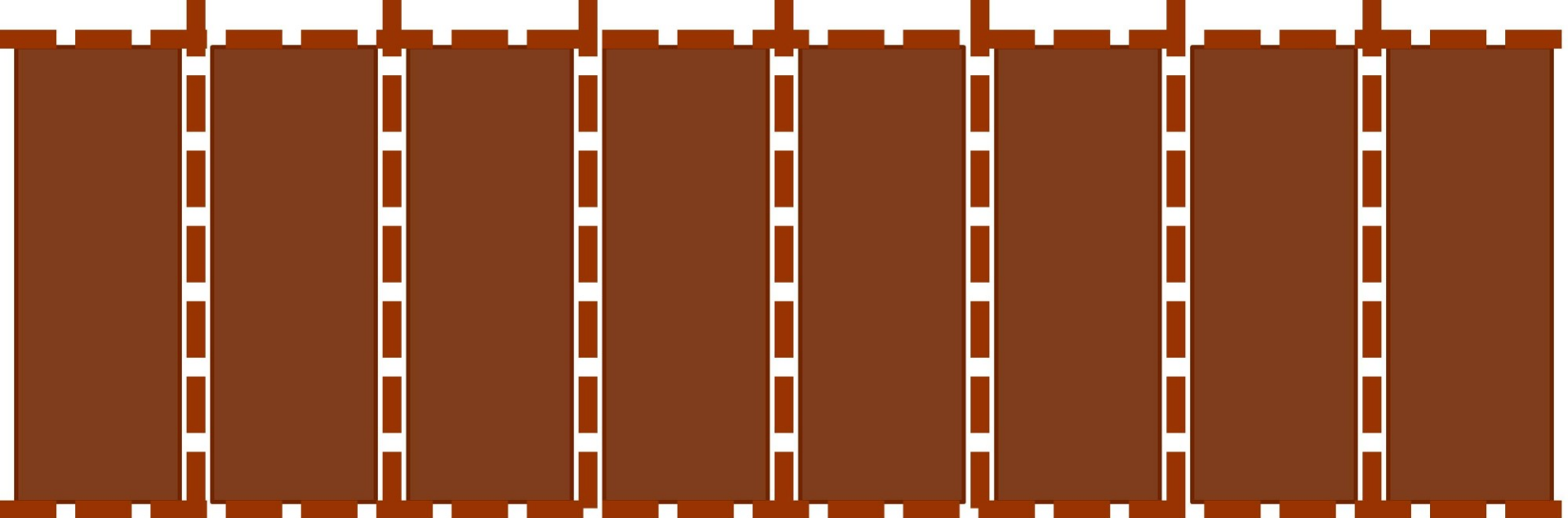
Oh, and we're going to need you to redesign our labels and name our new chocolate pieces.

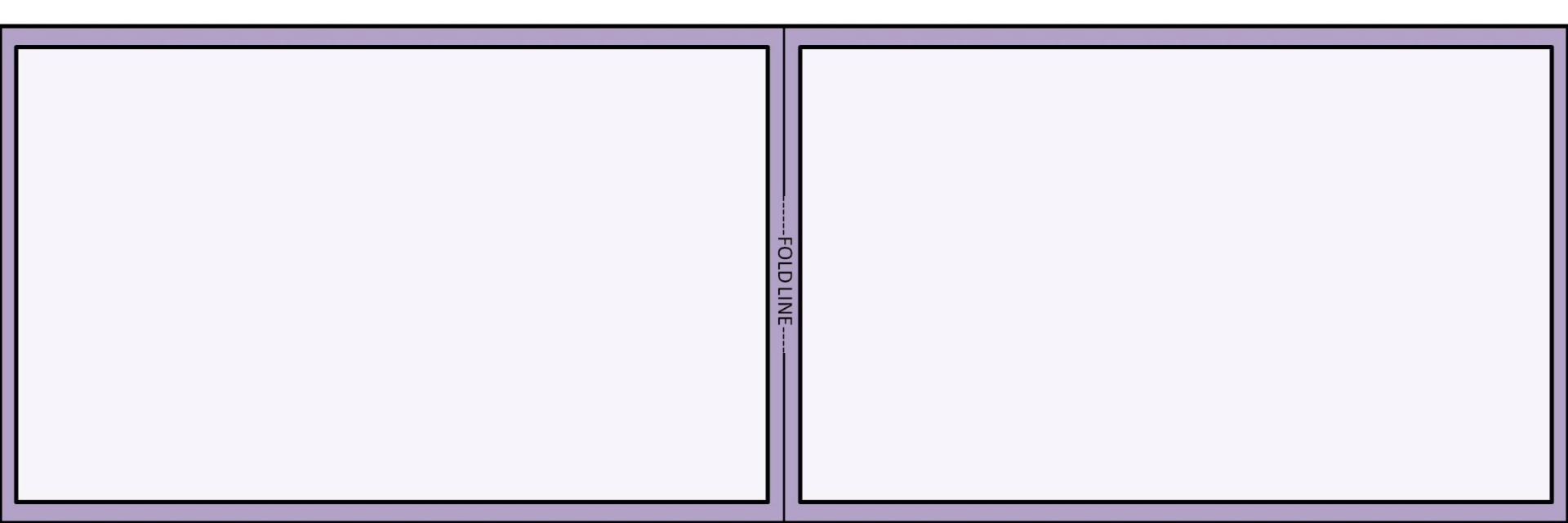


HELP!

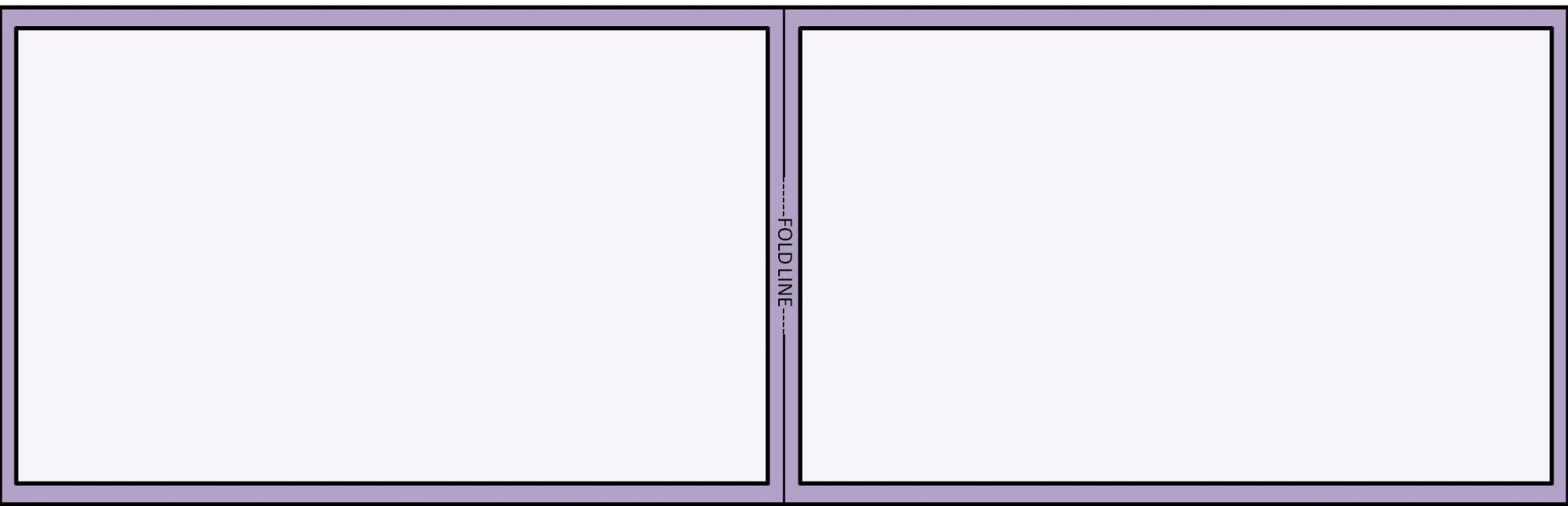
What can we do
to get our chocolates
into these wrappers?

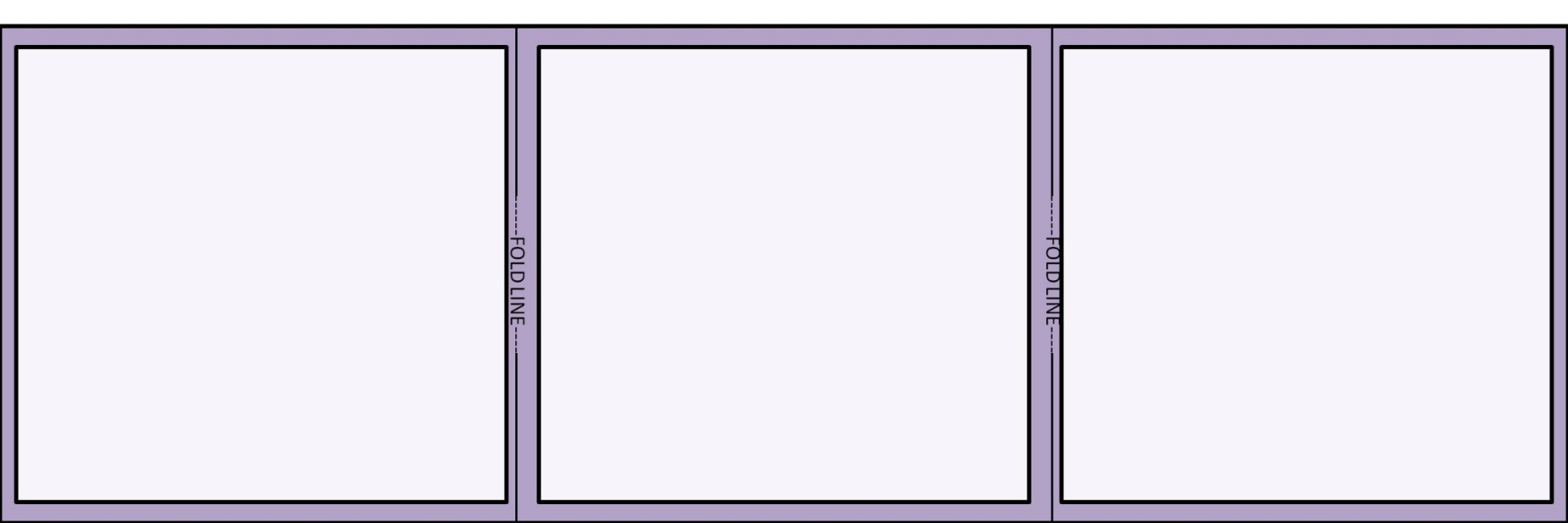




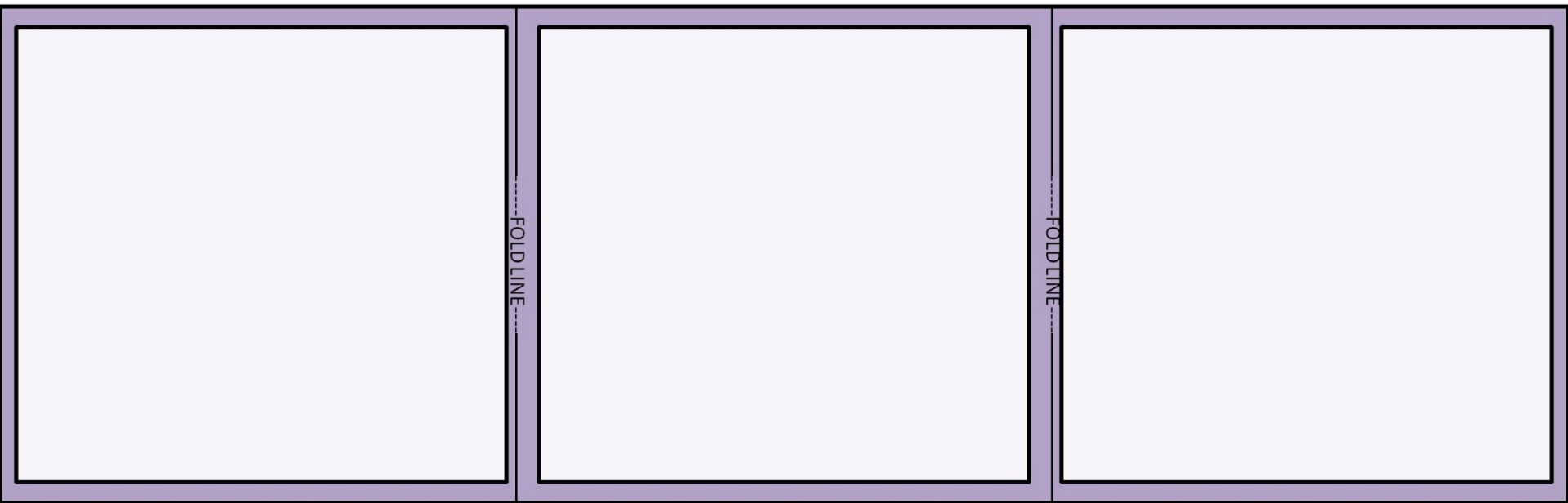


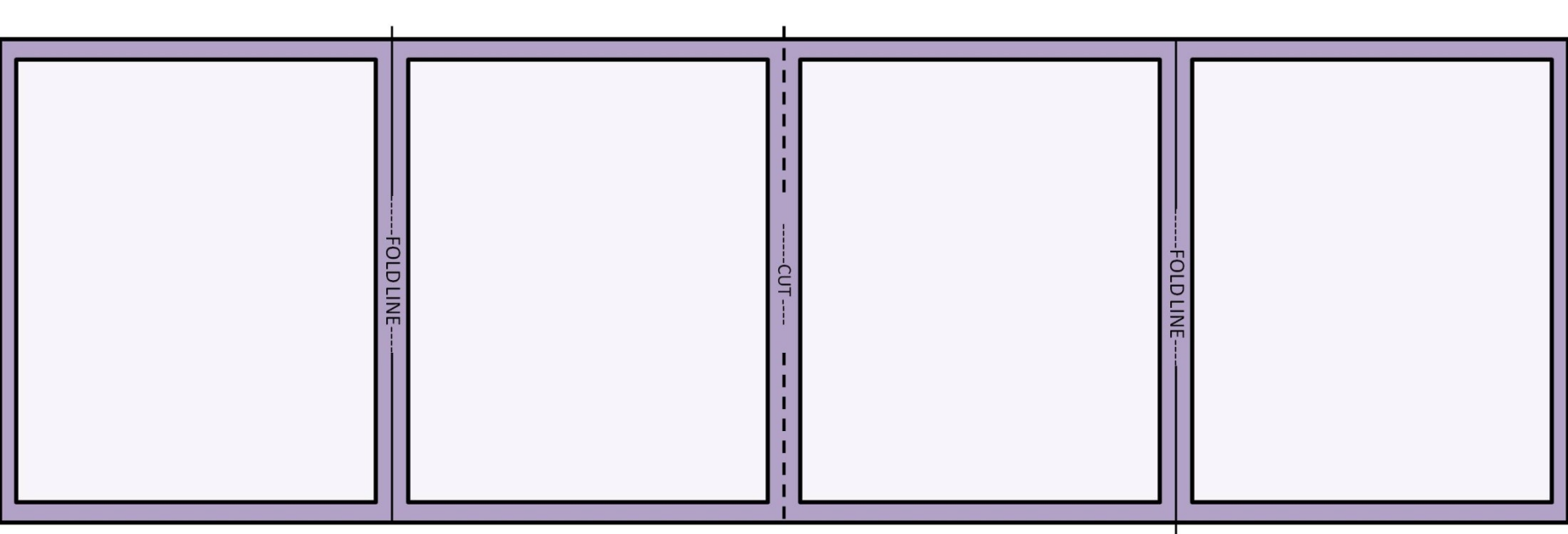
QTY (2) ½ size wrappers Glue chocolate bar pieces to one side of wrapper, fold closed, decorate front



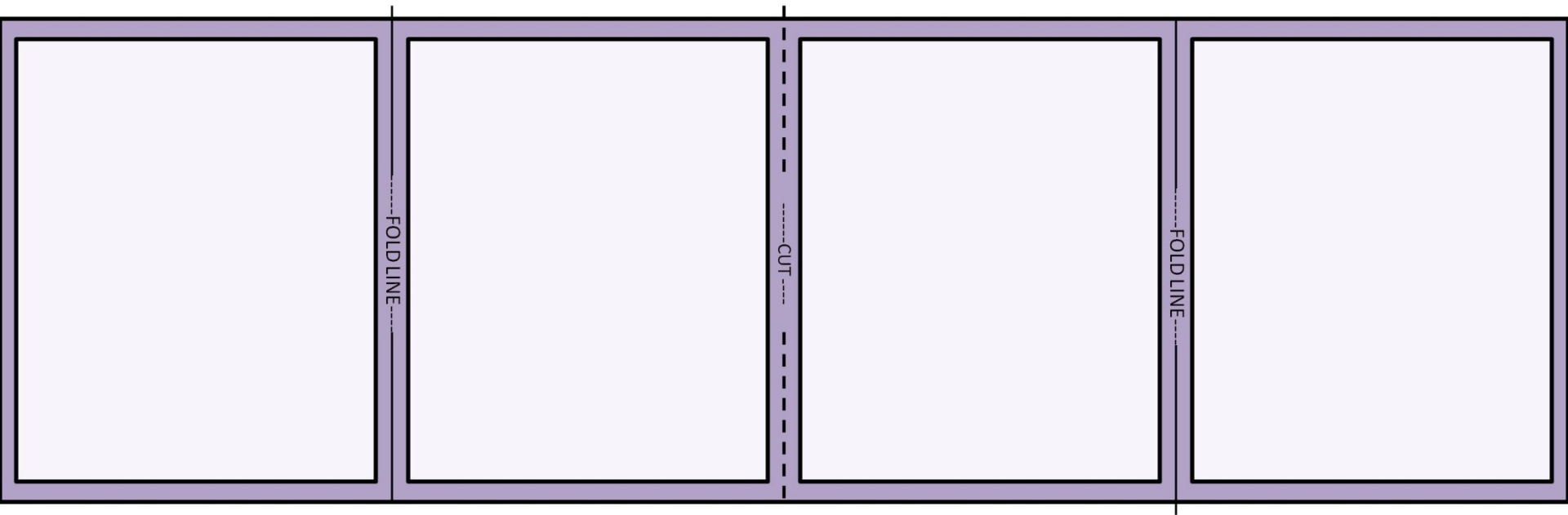


QTY (2) 1/3 size wrappers Glue chocolate bar pieces to middle section of wrapper, fold both sides closed toward middle, creating a tri-fold, decorate front flap





QTY (4) $\frac{1}{4}$ size wrappers Cut apart on the cut line.
Glue chocolate bar pieces to one side of wrapper, fold closed, decorate front



The Chocolate Fraction Factory

Hereby Awards,



for the

BEST

LABEL DESIGN



The Chocolate Fraction Factory

HEREBY AWARDS,

FOR THE

Best

Product Name